



AutoEDMS™ Document Management & Workflow Solution



AutoEDMS™ is a comprehensive and flexible EDM solution. Built in check-in/check-out, revision control, workflow routing, filenaming and file storage are just a few of the automated tasks you gain with AutoEDMS. Straight out of the box, it provides you with 80% of your required document management solution. The remaining 20% that is unique to your organization can be implemented with the built-in, easy-to-use customization tools. AutoEDMS is very flexible and scalable, so as you grow so can your AutoEDMS solution – across your department to enterprise-wide, over your LAN, WAN and the Internet.

Key Features

- Automatic Check-in and Check-out
- Revision control
- Custom workflow processes
- Built-in viewing and printing support for over 300 popular file types
- Automated ECO Work Orders
- Automated Transmittals
- Design your own databases and Forms
- Web-based Access
- Electronic mark-up and commenting (redline)
- Drawing compare
- Email integration
- Audit Trails



[Workflow](#) [Publish](#) [Batch](#) [Search](#) [View](#) [Edit](#) [Redline](#) [Compare](#) [Develop](#) [Email](#) [Audit](#) [History](#) [Help](#)

Simplifying File Access

AutoEDMS offers simple and secure access to all your electronic documents. Its powerful database keeps track of your files, and frees you from remembering fileserver names, volumes, directories and even filenames.

Organizing Documents

You can design AutoEDMS database screens (Forms) and profile information to organize your files and data any way you want. You can also define default file storage locations, to easily group related documents.

Locating Documents

AutoEDMS provides many powerful search tools that help you locate your documents. These tools include the Custom Search Library, the AutoEDMS Navigator, multiple field searches, Fuzzy Search and direct SQL queries.

Controlling Documents

AutoEDMS integrates seamlessly with all popular Windows programs, and using AutoEDMS-controlled files is as easy as File|Open and File|Close. This insures that all documents are profiled and document activity is tracked by AutoEDMS audit trails.

Revising Documents

AutoEDMS manages document revisions with a configurable revision control system. Once revised documents are approved, they become the new “master” files and previous revisions are rolled-back. This guarantees that you are always working with the latest versions of your files.

Routing & Approving Documents

AutoEDMS' powerful Workflow Engine™ automates document workflow routing. Use the Visual Workflow

Designer™ to set-up multiple workflow designs for file editing, checking and document approval. AutoEDMS' Workflow Engine automates file check-in/check-out procedures, batch file routing, drawing transmittal processes and multi-step ECO/ECR/ECN procedures.

View, Print, Redline & Drawing Compare

AutoEDMS views and prints over 300 file formats without using the native applications. The optional AutoEDMS

Redline Module™ provides electronic markup and commenting of your documents and drawings, and the Drawing Compare function overlays two drawings and shows the differences in separate colors.

Customizing & Developing AutoEDMS

The AutoEDMS QwikForm™ program enables you to easily customize and develop your database and screen designs and the Visual Workflow Designer allows you to customize your workflow procedures. For more advanced development, use the built-in ACL language. ACL is a RAD (Rapid Application Development) language that provides over 400

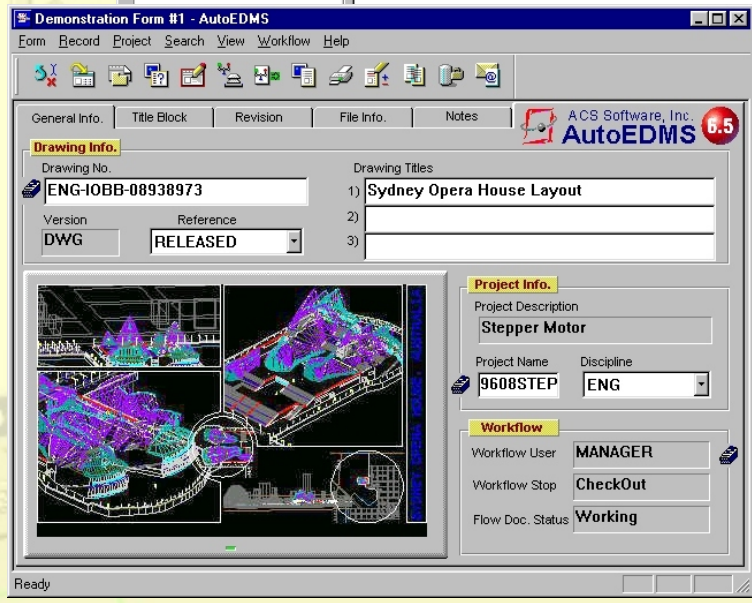
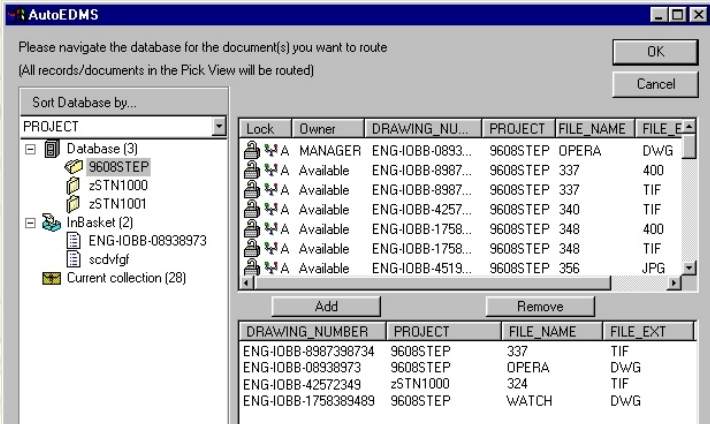
commands, libraries and system variables.

Internet Ready

AutoEDMS also has a web interface - the AutoEDMS Web Publisher™. The AutoEDMS Web Publisher provides secure, web-based lookup, view, print and download of AutoEDMS-managed files.

Support & Administration

AutoEDMS is network-ready and easy to support. By utilizing floating licensing, everyone can share AutoEDMS from a central location. When you're ready to update, run the Update Utility and AutoEDMS will update itself from ACS' web site. This guarantees that your AutoEDMS system is always up-to-date.



File Management

- Check-in/check-out file control
- Automatic filenaming
- Automated file/record copy, move, rename, delete
- Imports existing documents automatically

Document Database

- Supports an unlimited number of document databases
- Maximum database file size is 128 Gigabytes
- Supports hundreds of millions of files and records
- Up to 145 fields per record
- Up to 100 indexes per database
- Field types supported: character, list, date, integer, floating point, memo
- ODBC-compliant for integration with other databases and tools

Internet Ready

- Search any AutoEDMS database using any web-browser
- Multiple search routines
- Search, view, print and download
- Search results can be displayed anywhere within the web site (web pages are completely customizable)
- Supports any number of custom table design templates
- File links are maintained in the AutoEDMS database
- Supports secured login and 'guest' login

File Viewing and Printing

- Directly views and prints 300+ file formats including MS Office files, Lotus, Adobe PDF, AutoCAD, MicroStation, CADKey, CALS G4, JPEG, tiled and multi-page TIFF images
- Built-in batch plotting with bannering
- Supports plug-in viewers
- The optional AutoEDMS Redline Module provides electronic redlining and commenting for documents and drawings. It also offers file compare to highlight the differences between drawing revisions.

Workflow Designs

- Batch check-in/check-out
- Supports ad-hoc, administrative and production workflow routes
- Build ISO-9000, FDA 21CFR Part II compliant workflow routes
- Custom workflow designs
- Automates file approval and rework
- Route single or multiple files
- Optional Workflow Developer's Kit permits in-route ACL development and revision control options

File Routing and Approval

- Routes documents for edit, review, approval, ECO changes, Transmittal submissions, etc.
- Routed documents appear in user's AutoEDMS workflow in-basket
- Source files can be edited in place or duplicated to working copies
- Files can be routed forward or backward, through any number of workflow route steps

Revision Control

- Automatically tracks multiple document revisions
- Previous revisions are rolled-back to make room for new revisions

- Revisions can be compared with the optional AutoEDMS Redline Module to highlight changes

Audit Trails and Reporting

- Workflow transaction history database can roll-back all database and file revisions in case of system error (disk full, etc.)
- Integrated report designer - AutoEDMS Reports
- Audit trails are ODBC compliant and can be used by MS-Access, MS-Excel, Crystal Reports, Visual Basic and other ODBC compliant tools

Security

- Works on top of existing network security and includes user and group security
- AutoEDMS security prevents unauthorized access to files, databases, programs and AutoEDMS tools

User Interface

- Unlimited number of custom database screens (Forms)
- Includes pre-designed Form templates
- Floating Form toolbars can be customized

Customization Tools

- Drag and drop QwikForm
- Drag and drop Visual Workflow Designer
- Drag and drop Report Generator
- Built-in automatic filenaming, Email links, audit trails and more
- ACS Customization Language (ACL) includes over 400 EDM specific subroutines and libraries

Office Integration

- MAPI and SMTP-based Email
- ODMA and ELC-32 program integration
- Client/Server DDE
- ODBC-compliant
- ADO/OLE-DB compliant

System Requirements

- Windows XP/Vista/Windows 7
- Pentium with 512MB of memory
- Minimum 800 x 600 display with 256 colors
- Supports Windows, NetWare and Linux servers
- Optional Pervasive SQL client/server database engine

All specifications are subject to change without notice. AutoEDMS, AutoEDMS Workflow Engine, AutoEDMS Redline Module, AutoEDMS Web Publisher, QwikForm, Visual Workflow Designer, and ACL are trademarks of ACS Software, Inc. All other products and company names are copyright of their respective companies.

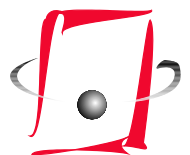
ACS Software, Inc.

P.O. Box 449
Torrance, CA 90508-0449
USA

Phone: (310) 755-6040

Fax: (310) 755-6050

Email: info@acssoftware.com



ACS
SOFTWARE INC.